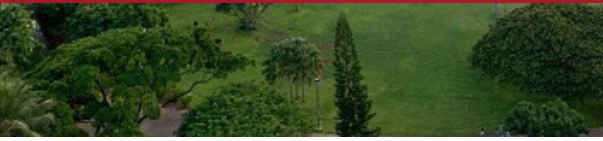


PARASOLEIL CASE STUDY

# Luana Waikiki

HONOLULU, HAWAII

Completed in 2020



## PRODUCT DETAILS

### APPLICATION

screen, cladding

### MATERIAL

aluminum

### PATTERN

custom

### FINISH

Moneypenny™, Deep Bronze™, COR11™

parasoleil.com  
303.589.4524  
hello@parasoleil.com



## PROJECT DETAILS

### SITUATION

Acquired in 2003, this property was originally furnished with solid metal partitions on each balcony that were limited in height. The new owners wanted to provide privacy and ventilation on each balcony with a visual appearance that would bring the original 1970's building into the 21<sup>st</sup> century.

### SOLUTION

The redesign of the building meant contemporizing the whole balcony with glass railings and new windows alongside the new Parasoleil panel lanai partitions with custom finishes for each side of the building's varying natural lighting exposure.

*Parasoleil*

# From the Client

## OWNER

Associa Hawaii & AOA Management Services

Not only did this project require a full face-lift and contemporized edifice, but the building had to accommodate guests during the entirety of the project. This was only achievable through intense coordination among all team members.

## SPECIFIER

Design Create Space

"Everything about the teamwork on this project was great. The idea of incorporating Parasoleil was quite easy. The balcony demising panels provided a vertical reiteration of what people see in the environment immediately around the property. Your team was able to engineer a really elegant solution to accommodate high wind loads and the kinds of obligations you have in a tropical resort." - Deb Rosenblum

## CONTRACTORS

Elite Railings & Windows Hawaii

Though it was the first time EWR had ever worked with Parasoleil, the team quickly got up to speed on handling the material with efficiency and ease. "It was not a difficult learning curve at all." Tackling the project 4 floors at a time allowed them to plan ahead, manage lead time and delays, and stay on schedule.

## PANEL

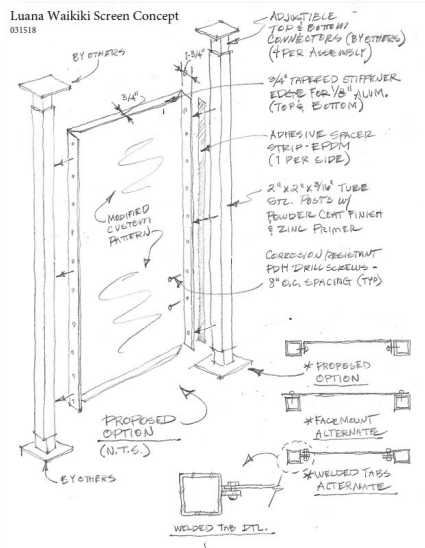
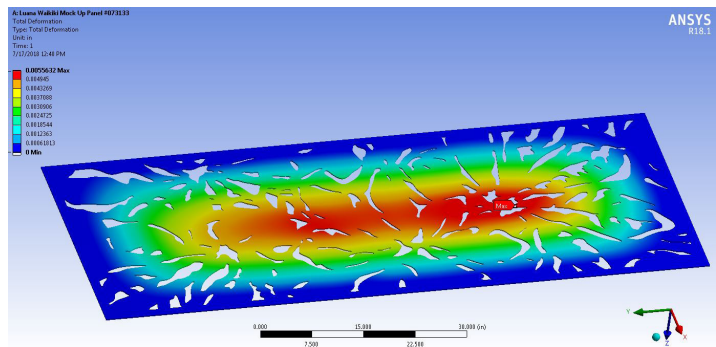
- 1/8" aluminum for 34.5" wide balcony demising panels
- 1/4" aluminum for 45.5" fire escape panels
- Stairwell cladding and pool panels

## HARDWARE

- Tube steel posts
- Direct mount PDH fasteners on adjustable posts

## ENGINEERING

- Incorporated panel returns in "Z" configuration on vertical edges
- Panel returns were incorporated into top and bottom to decrease deflection of the panel allowing the panel thickness to be reduced to 1/8"



## DEMISING PANEL

Inspired by a native flower of the area, the organic pattern formed an artful connection to the history of the Hawaiian Islands along with visual privacy

## SCREEN CONCEPT

Initial sketch of the balcony screens with post assembly to allow installation tolerances for site existing conditions.

*Parasoleil*

*All Parasoleil finishes are warranted for 10 years and all projects are backed by the Parasoleil brand. Patterns and hardware are protected under copyright and patent law, respectively.*